

STRONGER  
**ENTRANCES,**  
SMARTER  
**AESTHETICS**



## About JSW Ltd.

JSW Steel, the flagship business of the diversified US\$ 24 billion JSW Group, is not only a leading steel manufacturing company in India but also recognized as the best steel company in India. As one of India's prominent business houses, JSW Group has interests in energy, infrastructure, cement, paints, sports, and venture capital. Certified by Great Places To Work in 2021, JSW Steel has established itself as an organization with a robust cultural foundation. Over the last three decades, it has evolved from a single manufacturing unit to become India's premier integrated Steel plant with a capacity of 37.5 MTPA in India and the USA (including 6 MTPA under commissioning in India).

## About JSW ColourFrame

Introducing JSW ColourFrame, the next-generation steel door frame that combines strength, style, and sustainability. Crafted from high-quality JSW Steel, ColourFrame brings unmatched structural integrity to your doors, ensuring they stay firm and flawless for years. Its corrosion-resistant surface stands strong against weather and wear, while its superior formability allows for precise fitting across a variety of architectural styles. With a wide palette of pre-finished colours, it seamlessly complements both interiors and exteriors – eliminating the need for repainting. ColourFrame is completely termite-proof, requires zero maintenance, and is manufactured with environmentally responsible practices.



### Features:



**Structural strength**  
that lasts for decades



**Contemporary design**  
in a palette of elegant shades



**Sustainable manufacturing**  
aligned with  
green building practices



**Perfect formability and  
ease of installation**



**Termite-proof,  
corrosion-resistant reliability**

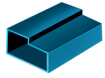
Our state-of-the-art laboratory is equipped to meet the most stringent quality expectations, backed by our adherence to ISO 9001:2000-certified Quality Management Systems.

## Product Parameters

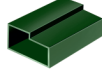
Parameters	Thickness (mm)	Width (mm)	Yield Strength (Mpa)	Zn Coat (GSM)	Al-Zn Coat (GSM)
Values	0.70 – 2	720 – 1500	240 – 550	120	70

### Colour Range -

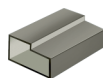
RAL 5012



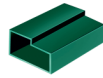
RAL 9002



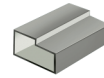
RAL 6002



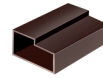
RAL 6016



RAL 9003



RAL 8017



JSW ColourFrame combines timeless durability with tailored design. Choose from a wide palette of colours and finishes, with the flexibility to customise as per your project's vision.

## Imprint of Excellence

A non-removable liner marking and watermark logo on every ColourFrame ensures genuine JSW quality in every piece.

### Non-erasable Liner Marking

To ensure you receive the original and high-quality product, look for the non-erasable liner marking

PPGL – COLOURFRAME AZ70 (ISI) – 15965 BIS APPROVED

PPGI – COLOURFRAME Z120 (ISI) – 14246 BIS APPROVED

### Watermark Logo

The watermark logo helps to differentiate the original product from the other brands



## Why JSW ColourFrame?

FEATURES	JSW ColourFrame	WOOD	OTHER MATERIAL
Corrosion Resistance	Yes	No	Yes
Termite Proof	Yes	No	Yes
Environment Friendly	Yes	No	Yes
Ease of Installation	Yes	No	No
Low Maintenance	Yes	No	No
Damp Proof	Yes	No	No
Wide Color Range	Yes	No	No
BIS Approved	Yes	No	No

