





JSW STEEL LTD.
JSW Centre,
Bandra Kurla Complex,
Bandra (East), Mumbai - 400051

Phone: 022 4286 1000
Fax: 022 4286 3000
Toll free: 1800-225-225
Email: support.steel@jsw.in
Web: www.jsw.in/steel

Feb'23

Disclaimer: While every effort has been made to ensure the accuracy of the information contained within this publication, the use of the information is at reader's risk and no warranty is implied or expressed by JSW Steel with respect to the use of information contained herein. The information in this publication is subject to change or modification without notice. Please contact the JSW Steel office for the latest information.

JSW Steel Ltd. - CIN: I27102mh1994plc152925
JSW Steel Coated Products Ltd.- CIN: U27100mh1985plc037346



Galvalume Steel for Solar Structures



Premium GALVALUME®
Coil & Sheets



Table of Contents

05 JSW Group
Overview

06 JSW Steel

08 JSW Steel
Coated Products

11 Setting
Benchmarks

13 Awards &
Recognitions

14 Manufacturing
Facilities

15 Manufacturing
Process

17 JSW
Galvos

21 Technical
Specifications

23 The JSW Galvos
Promise

24 Storage, Handling
and Maintenance

25 Packaging

27 Clientle

28 Offices





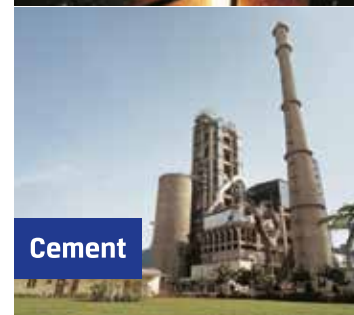
Steel



Energy



Infrastructure



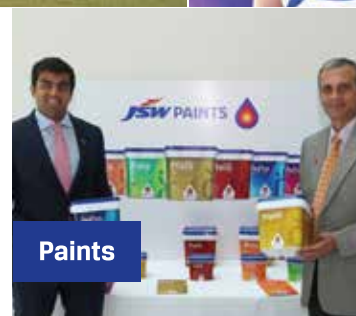
Cement



Sports



Foundation



Paints



Ventures

JSW Group

A \$22 billion conglomerate, with presence across India, USA, Italy, South America & Africa, the JSW Group is a part of the O. P. Jindal Group with strong footprints across economic sectors, namely, Steel, Energy, Infrastructure, Cement, also in Ventures, Sports, Furniture and Paints.

The Group is paving the way for India's development as a global superpower. JSW Steel is India's leading steel producer and among the world's most illustrious steel company. The Group is also leading in every sector that it operates in. JSW Steel has always been at the forefront of research and innovation. It has a strategic collaboration with global leader JFE Steel of Japan, enabling JSW to access new and state-of-the-art technologies to produce and offer high-value special steel products to its customers.

JSW Energy is one of the earliest private entrants into the power sector positioned strongly as a full-spectrum integrated power company with a presence across the power sector value chain. It is one of the most efficient Power company in the country with one of the country's largest open cast mining operation by volume and one of the largest private sector Hydro operator in India.

JSW Cement creates the building blocks of India with its environment friendly products. JSW Infrastructure is contributing to the nation's development by providing world class services to clients through state-of-the-art ports, terminals, shipyards and other facilities.

JSW Sports runs the Sports Excellence Program (SEP) to identify, nurture and develop Indian athletes to ensure that they bring sporting glory to the nation on the global stage. JSW Sports also runs the Bengaluru Football Club, Delhi Capitals cricket team and the Haryana Steelers kabaddi team.

JSW Paints is a greenfield venture of the JSW group backed by cutting-edge technology, automation and scale that's comparable to leading players in the Indian paints sector. The company will manufacture and market both industrial coatings as well as decorative paints. In the decorative paints segment, the company will offer a complete range of only water-based paints for Interior & Exterior walls, wood & metal – various surfaces in homes.

JSW Ventures is an early-stage, tech-focused, venture capital fund of JSW Group. JSW Ventures extends its partnership not just through capital, but through a commitment to build exceptional companies by developing growth strategies, improving financial functions, and providing access to the investor community and support from JSW Group's extensive resources.

The JSW Group is committed to creating more smiles at every step of the journey. JSW Foundation, the Group's CSR and sustainability arm, is in constant pursuit of making life better for communities with its various initiatives in the fields of health, education, livelihood and sports, along with art and culture.

JSW Group is proud to be charting a course to excellence that creates opportunities for every Indian and leads to the creation of a sustainable, dynamic and developed nation.

JSW Steel Ltd.

The flagship company of \$22 billion JSW Group. Over the last three decades, JSW Steel has grown from a single manufacturing unit to become India's leading integrated steel company with capacity of 28 MTPA in India & USA (including capacities under joint control).

JSW Steel, certified as great places to work in 2021, has emerged as an organization with a strong cultural foundation and great potential to be among the Top 100 companies. It is one of the fastest growing companies in India with a footprint in over 140 countries with state-of-the-art manufacturing facilities located in Karnataka, Tamil Nadu and Maharashtra. It is recognized for its innovation and quality.

JSW Steel offers a wide gamut of steel products that includes Hot Rolled, Cold Rolled, Bare & Pre-Painted Galvanized & Galvalume®, TMT Rebars, Wire Rods, Special Steel, Electrical Steel and Tinplate.

JSW Steel continues to enhance its capabilities to meet the rapidly changing global market needs. To stay on the leading edge of technical advancement, JSW Steel has entered into technological collaboration with JFE Steel Corp, Japan to manufacture high strength and advanced high strength steel for the automobile sector. JSW Steel has also entered into a joint venture with Marubeni-Itochu Steel Inc. Tokyo, to set up a state-of-the-art steel processing centers.

To strengthen its global network, The company has acquired steel manufacturing facilities at Texas & Ohio in USA & in Piomboni, Italy. Going forward, JSW Steel aims to increase the annual production to 40 million tons within a span of 10 years.

Vijayanagar Works

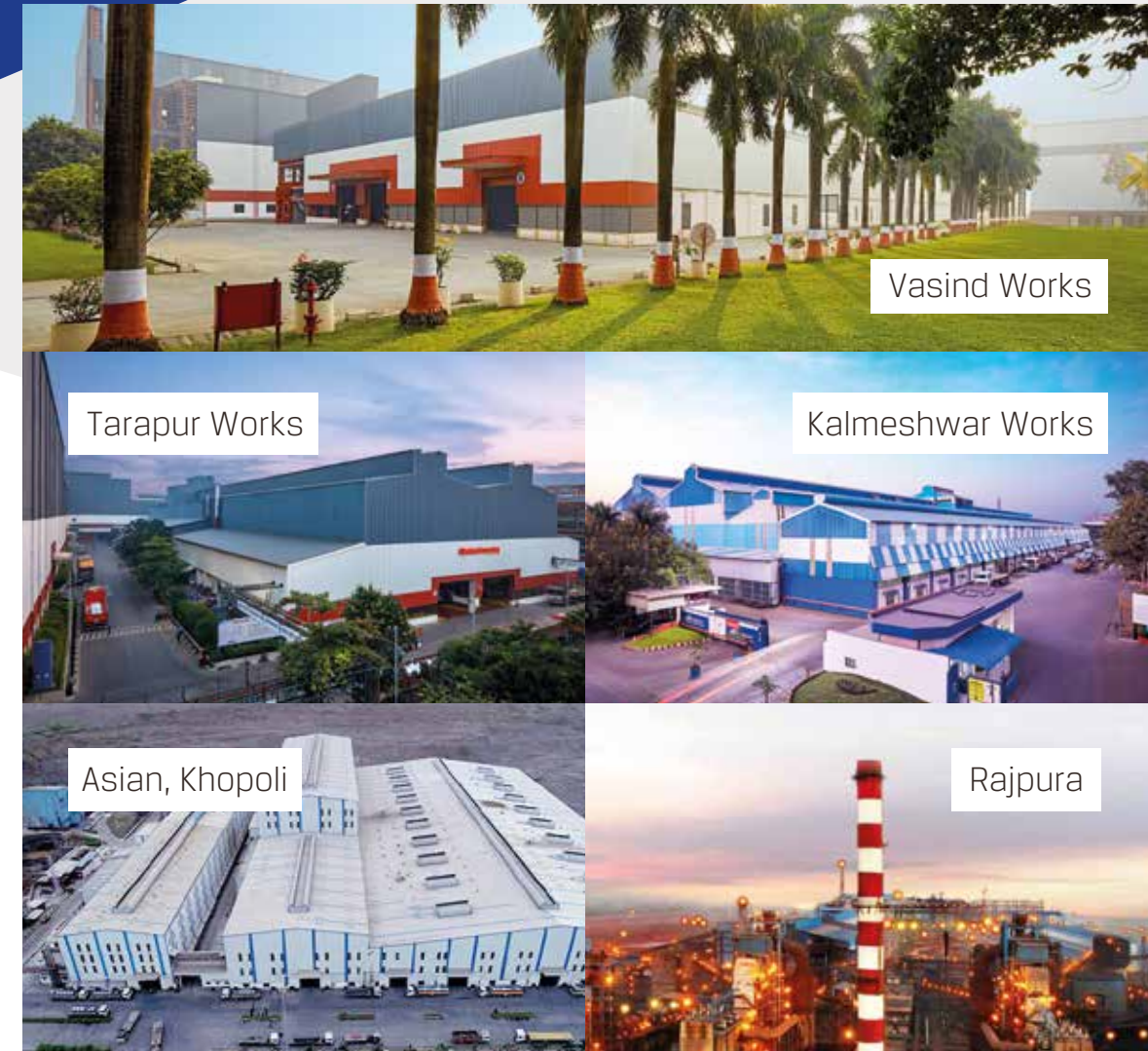
Salem Works

Dolvi & Salav Works

08



09



JSW Steel Coated Products Ltd.

JSW Steel Coated Products Limited is 100% subsidiary company of JSW Steel, having state-of-the-art manufacturing facilities in the state of Maharashtra & Punjab.

JSW Steel Coated Products Ltd. is India's largest manufacturer and exporter of Coated Steel as well as Colour Coated Steel. The production facilities, Tarapur and Vasind Works, are located in the vicinity of major ports. The company's Kalmeshwar Works is centrally located near Nagpur to serve across regions.

JSW Steel is an ISO 9001: 2008 Certified Organization and the first licensee producer for Galvalume® in India. The Tarapur plant is specialized in manufacturing ultra-thin Coated Products. The company is also a manufacturer of appliance grade Colour Coated products. JSW Steel's Kalmeshwar Works is the first producer of Galvanized and Colour Coated Steel in India. JSW Steel also has established India's first Appliance Grade Line to manufacture Pre Coated and Vinyl Coated Metal.



Blast Furnace - IV

Steel Melting Shop

Setting Benchmarks

- First continuous annealing line in India
- Widest Cold Rolling Mill (upto 1870 mm width)
- India's largest Coated Steel producer
- First Licensee Galvalume® producer in India
- JSW Steel Salem works is the largest integrated Alloy and Special Steel plants in India
- One of the widest Hot Strip Mills in India
- India's most modern and largest Vertical Caster-300/260/220 x 2200 mm
- India's only Multi-Radii Bloom Caster operational at Salem works
- ZERO EFFLUENT discharge for greener & cleaner environment
- India's largest Long Steel producer by installed capacity
- India's first Zn-Mg-Al alloy coated steel producer



Awards & Recognitions

Business & Operations

- Recognized as 'ET Iconic Brands of India for 2022' at the ET Iconic Brands of India Conclave
- Awarded 'Brand of the Decade Award' by BARC Asia
- Golden Peacock Award of CSR 2021 awarded to JSW Steel
- Recognized for 'Excellence in CX 2022' at the Economics Times CX Summit
- JSW Privilege club was honored as the Best Channel loyalty program at the Annual Customer Fest show 2022
- DX (Digital Transformation) award in the customer experience category by CII- Centre for Digital Transformation

Management

- BHEL Best Supplier Award, 2019
- Business Standard CEO of the Year Award, 2018
- Outstanding Business Leader of the Year CNBC-TV18, 2018
- Chief Finance Officer of the Year, 2018

Sustainability

- Awarded 'The Economic Times Sustainable Organization 2022' for adopting valuable sustainable initiatives
- Recognized as sustainability champion by World Steel Association for the 4th consecutive year
- JSW Steel Dolvi & Salem works won 3 platinum awards, at confederation of Indian Industry IQ national safety practice competition 2022
- 2021 CDP Climate Change assessment: Maintained leadership rating of A - becoming the only company in India & Asia except Japan, to achieve a leadership level rating from the category
- JSW Salem became the first integrated steel plant in the world to achieve the British Safety Council 5 Star rating for health, safety & well being



JSW Steel wins the prestigious Deming Prize for its excellence in TQM.

The JSW Vijayanagar Works is the largest single location integrated steel plant in the world to be awarded the prestigious Deming Prize for excellence in Total Quality Management (TQM) presented by the Union of Japanese Scientists and Engineers (JUSE).

Manufacturing Facilities

Vasind Works

Vasind works is located 70 kms from Mumbai. It is a full fledged complex with Cold Rolling, Galvanising and Colour coating facilities. Vasind works has India's first appliance grade Colour coating line, the grades of this line are approved by major white good manufacturers. It sources HR steel from Dolvi & Vijayanagar works to manufacture value added steel products.

Tarapur Works

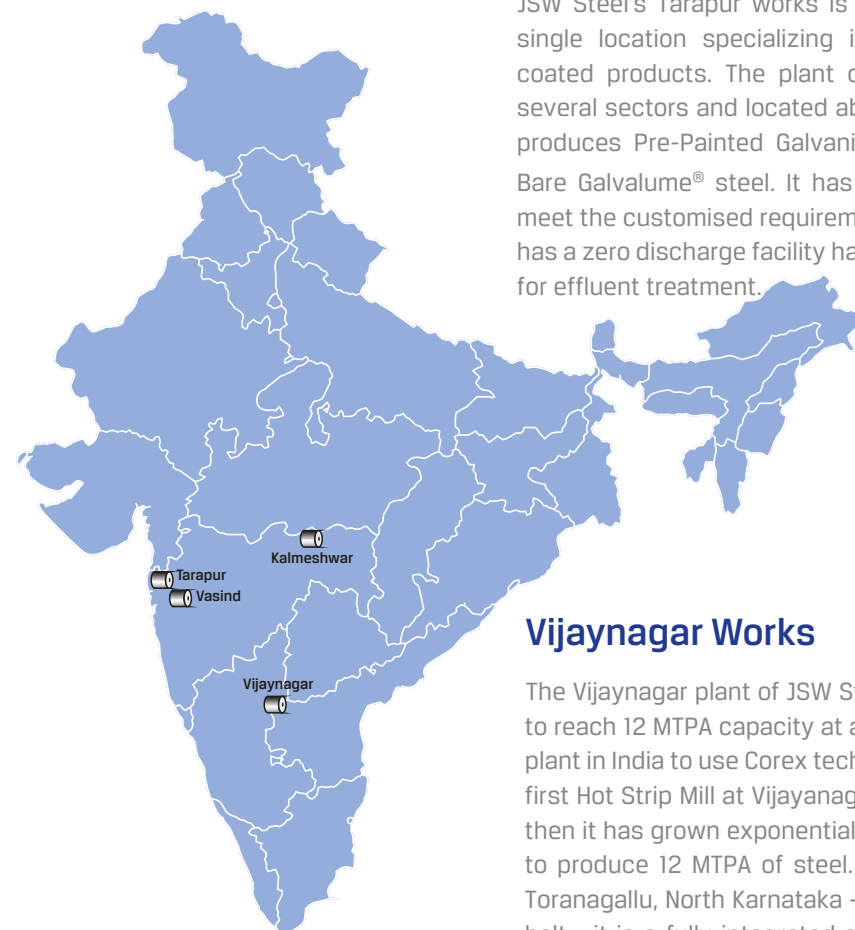
JSW Steel's Tarapur works is the largest coated steel plant in a single location specializing in the manufacturing of ultra-thin coated products. The plant offers coated products catering to several sectors and located about 100 km from Mumbai. The plant produces Pre-Painted Galvanised / Galvalume®, Galvanised, and Bare Galvalume® steel. It has a unique service center facility to meet the customised requirements of various segments. The plant has a zero discharge facility having multi-effect evaporator system for effluent treatment.

Vijaynagar Works

The Vijaynagar plant of JSW Steel is the first integrated steel plant to reach 12 MTPA capacity at a single location in India. It is the first plant in India to use Corex technology for hot metal production. The first Hot Strip Mill at Vijayanagar was commissioned in 1997. Since then it has grown exponentially and now has an installed capacity to produce 12 MTPA of steel. Located 380 km from Bangalore in Toranagallu, North Karnataka - a part of the Bellary-Hospet iron ore belt - it is a fully integrated steel plant well-connected with both Goa and Chennai ports.

Kalmeshwar Works

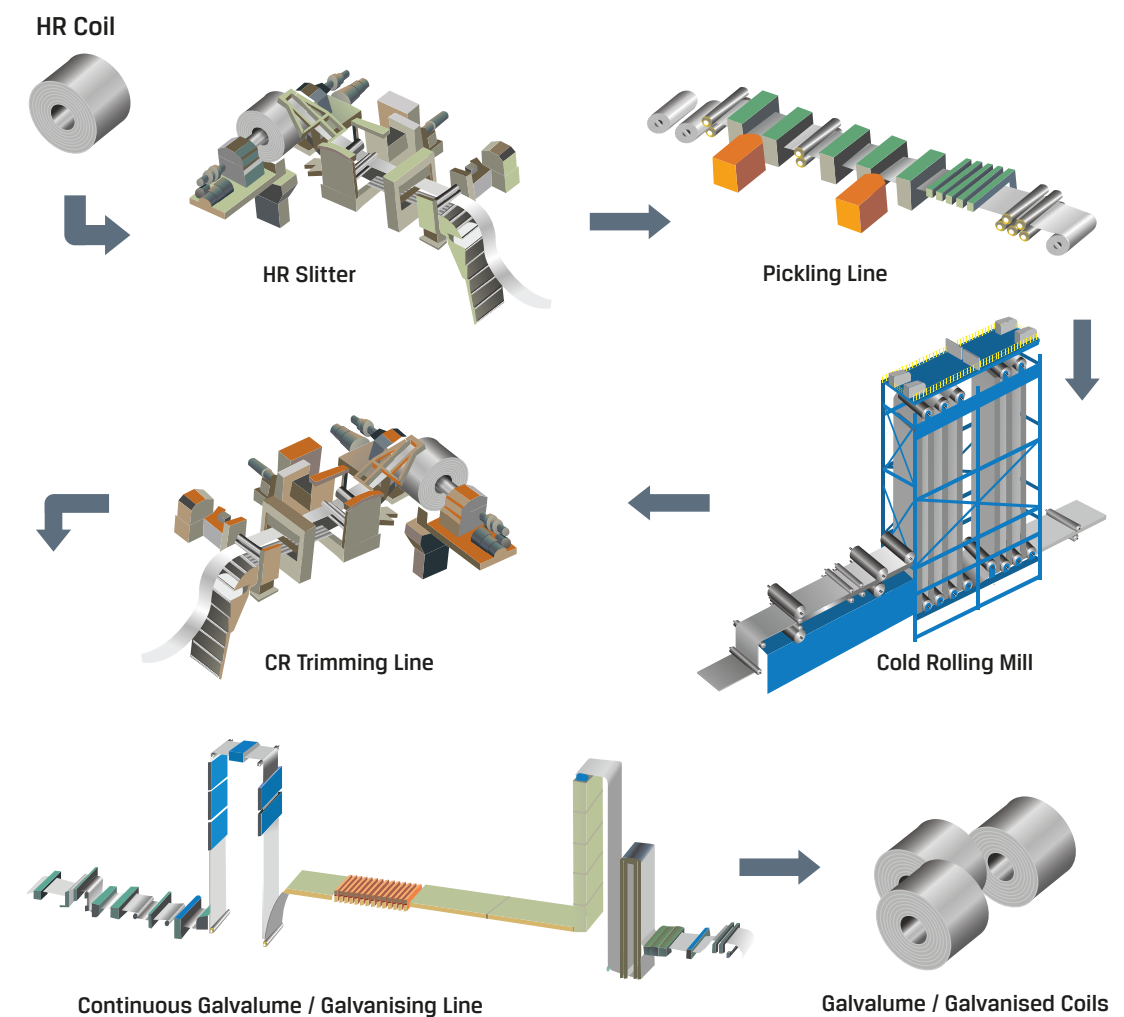
JSW Steel's Kalmeshwar works is centrally located 30 kms from Nagpur to cater the requirements from all regions. It has galvanising capabilities to produce higher thickness and higher coating. The strict adherence to standards of excellence in quality has led to attain many world renowned certifications to Kalmeshwar works. Kalmeshwar works is India's first coated steel manufacturing facility. It produces Galvanised, Galvalume®, Pre-Painted Galvanised / Galvalume® steel.



Manufacturing Process

Galvalume® steel composition, which combines the galvanic corrosion resistance of Zinc with the barrier corrosion resistance of Aluminium, this product was discovered by Bethlehem Steel Corporation after an extensive research program. The coating's unique microstructure embeds Zinc rich areas within an Aluminium rich matrix which, while allowing Zinc to provide galvanic protection, restricts its dissolution.

Galvalume® steel can be used for roofs of all types and pitches and can be employed for walls. It is recommended for any new building where a cost-effective maintenance for roofing system is required. Excellent resistance to corrosion and good heat reflectivity make Galvalume® steel the preferred choice for farm building, roofing and siding applications. The appearance can be further enhanced with the use of pre-painted Galvalume® sheet.





Complete Solution for Solar Structures

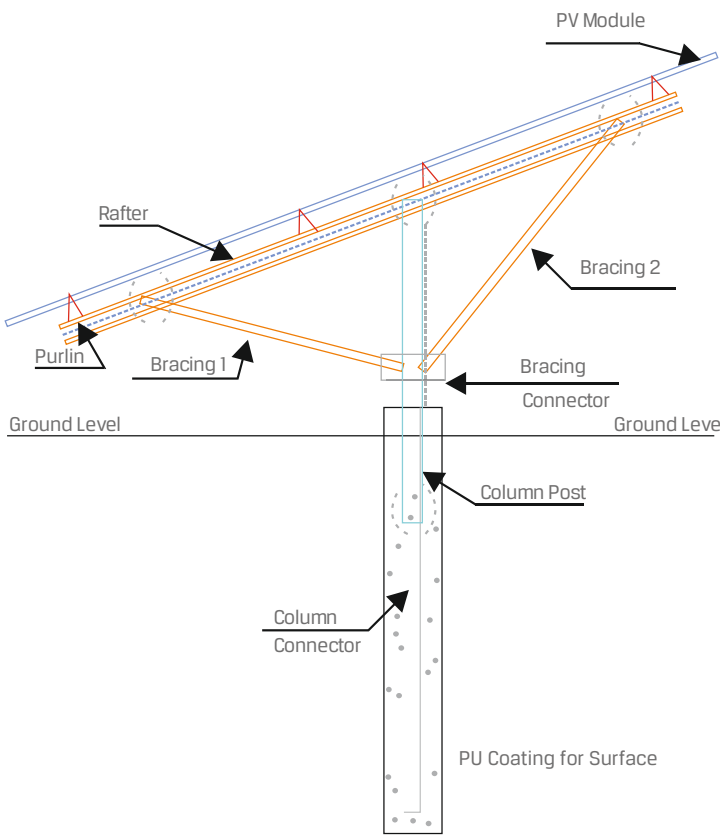
JSW Galvos is an alloy coated product which nominally contains 55% Aluminum, 43.5% Zinc and 1.5% Silicon by weight applied by the hot-dipping process. The product is ideal for applications requiring superior corrosion resistance and heat reflectivity, typically required for building construction, appliances, agricultural equipment and several non-exposed automotive components

JSW Steel is the first Indian company to produce Galvalume®, coated steel (the coated product renowned for its excellent corrosion resistance and heat reflectivity) under a technology license from BIEC International Inc. USA.

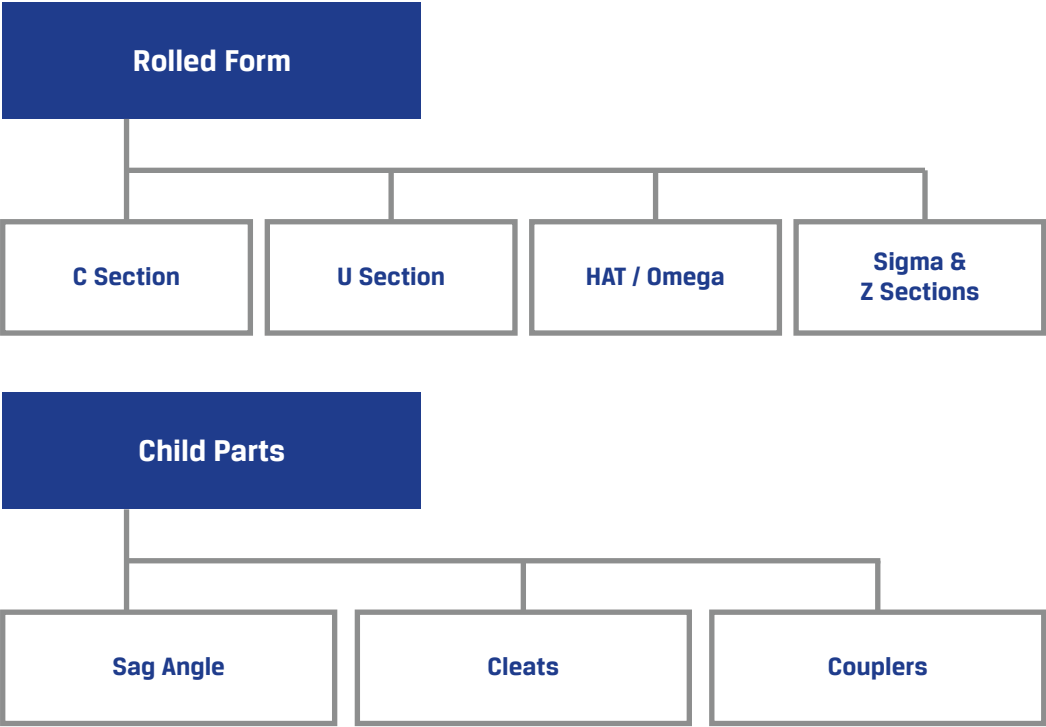
With thicknesses ranging from 0.70 mm to 3 mm and yield strength from 350 to 550 Mpa, JSW Galvos is designed to meet the complete requirements of solar structures. We are offering solar mounting solutions of all sizes ranging from small kW scale to large multi-MW scale projects which are specifically designed to combat inclement weather in any climate. For the past several years, we have dedicated ourselves to improving the durability and quality of our products to ensure that they can withstand the harsh environments.

For challenging environments like usage in concrete and C4 & above environments, it is advisable to coat the structure with Epoxy/PU coating before installation. The benefits of this protective layer are:


- Acting as a physical barrier between aggressive environment and base substrate
- Inherent anti corrosive properties
- Extremely hard and resistant to friction
- Particularly resistant to diluted acids, alkalis, Petroleum products, to some solvents, water, sea water
- Prevent oxidation of substrate and thereby corrosion




Our multi component offerings include:




Advantages:




Maximum Durability



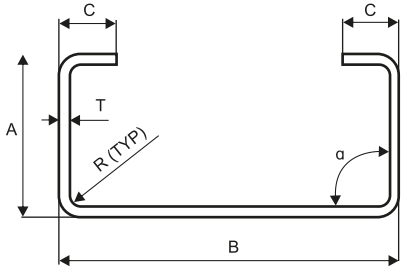
Onsite Versatility



Flexible Design

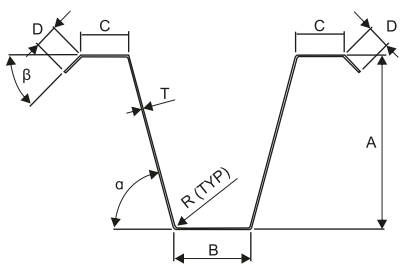


Assured Quality



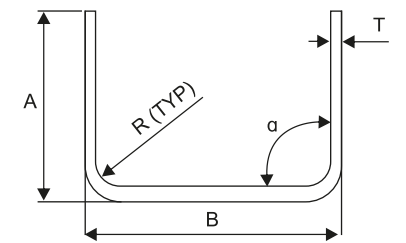
C Section

Thickness	0.50-3.5 mm
Web (B)	40-300 mm
Flange (A)	25-100 mm
Lip (C)	5-30 mm
D	-
Bending degree	-
O/P Per Day	With Lip - 1800 No.s W/O Lip - 3500 No.s (Upto 4000 mm) 2500-6000 No.s (Upto 12000 mm)



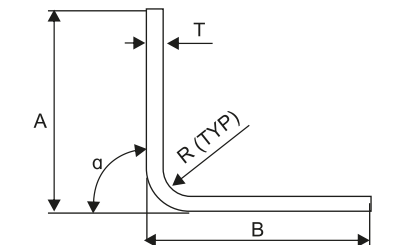
HAT

Thickness	0.50-3.5 mm
Top Flange (B)	25-150 mm
Height (A)	30-150 mm
Bottom Flange (C)	15-40 mm
Lip (D)	3-25 mm
Bending degree	50,65,75 & 90
O/P Per Day	3500-5000 No.s



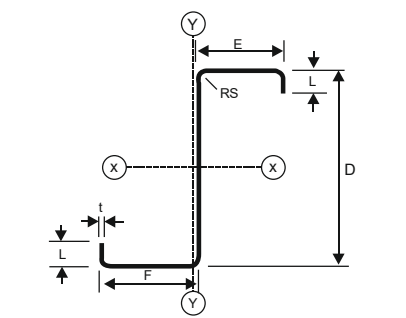
U / Channel Section

Thickness	0.80-3.5 mm
Flange (B)	15-100 mm
Web (B)	15-200 mm
Angle	90



Angle Section

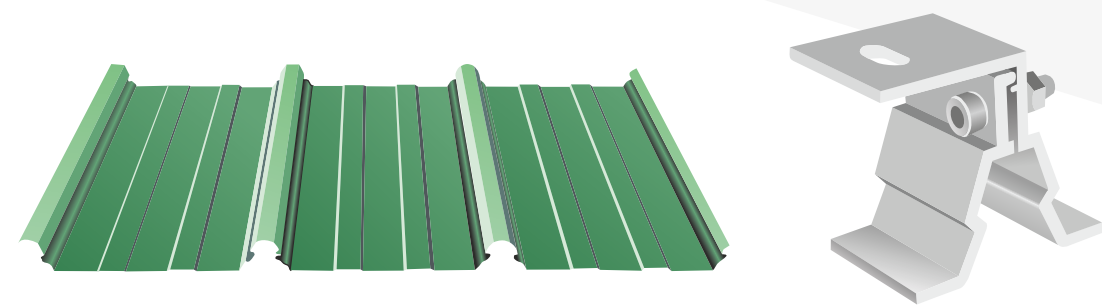
Thickness	0.90-3.5 mm
Flange (B)	20-100 mm
Web (B)	20-200 mm
Angle	90



Z Section

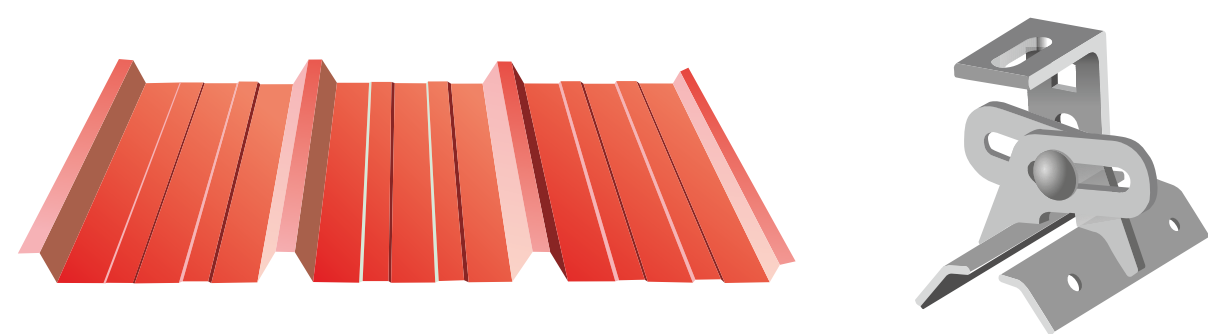
Thickness	1.60-3.5 mm
Flange (D)	49-56 mm
Web (E,F)	80-300 mm
Lip (Angle)	45-90

Solar Panel installation on concealed system profiled Roof



- Steps of Installation:
- 1. The Roofing sheets are fixed over specially designed concealed fixing clip mostly manufactured from hi-tensile Aluminium.
 - 2. 'S5' type Aluminium clamps should be fixed on roofing sheets with the help of bolts.
 - 3. Solar panels should then be installed on the profile.

Solar Panel installation on Trapezoidal Profiled type Roof



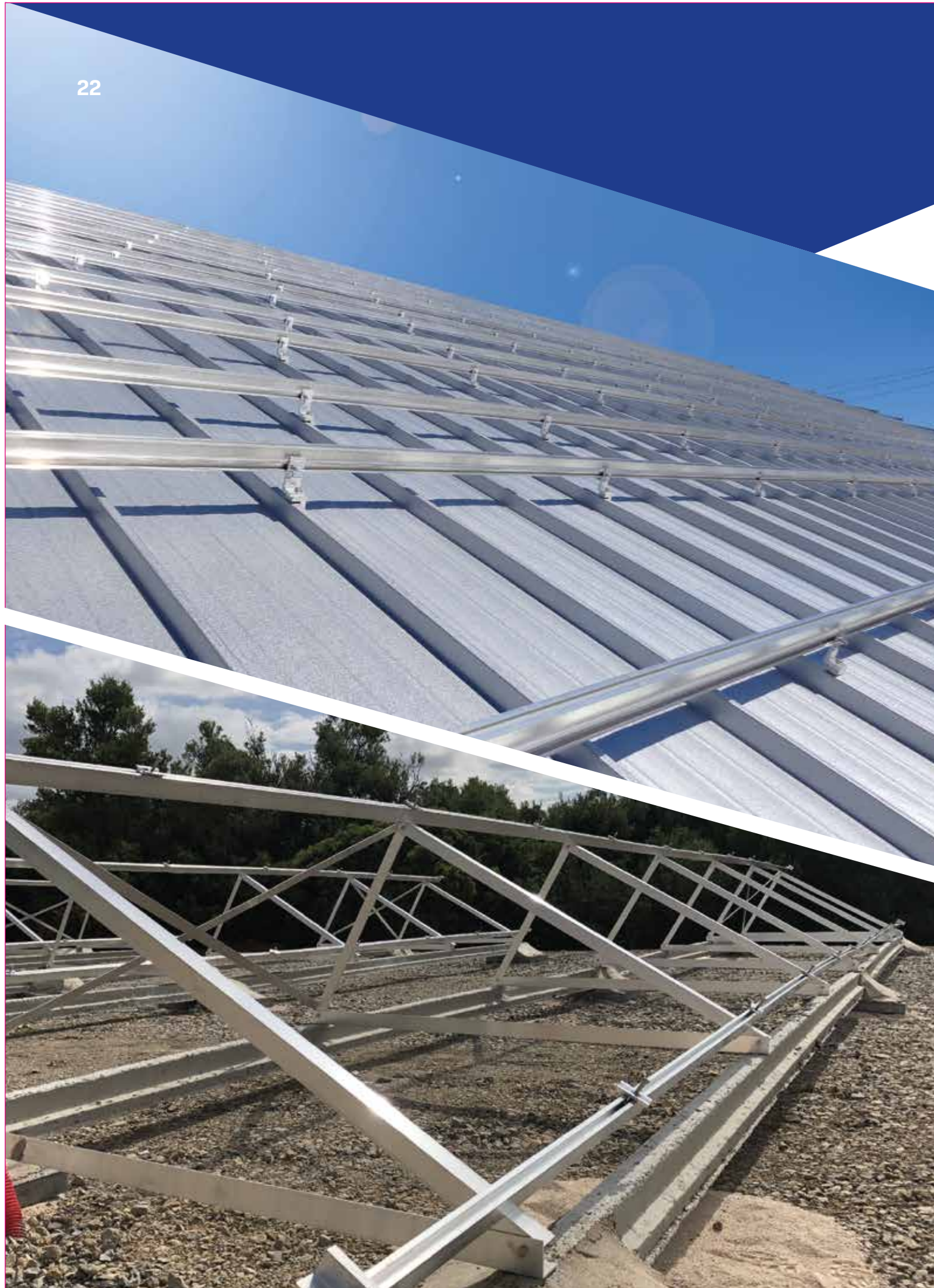
- Steps of Installation:
- 1. Clamps should be fixed on the roof with the help of fasteners by puncturing the roof for clip installation.
 - 2. The Solar panel is installed on clamps.

Technical Specifications

Product	In Line Coating (Pre Galv)		Hot Dip Galvanising (Post Galv)	
	Coating	Thickness	Coating	Thickness
Galvalume®	AZ150 / AZ180 / AZ210	upto 3.0 mm	N/A	N/A
Galvanised	Upto Z600	upto 3.5 mm	Upto Z1500	upto 6 mm

Referance Standard	Grade	Yield Strength (Mpa), Minimum	Tensile Strength (Mpa)	%Elongation Minimum	Thickness	Width (mm) - Mill edge , Tolerance -0/+5 mm	Slit Width Tolerance -0/+0.5 mm	AZ Coating (GSM)
			Minimum		mm As per Standard			
ASTM A792	Grade 50 Class -1	340	450	12	0.70 to 3.00 mm	1550 Max	As per customer requirement	AZ150 / AZ200
	Grade 50 Class -4	340	410	12	0.70 to 3.00 mm	1550 Max	As per customer requirement	AZ150 / AZ200
	Grade 80 Class -1	550	570	NA	0.70 to 3.00 mm	1550 Max	As per customer requirement	AZ150
IS 15961	YS 300	300	340	20	0.70 to 3.00 mm	1550 Max	As per customer requirement	AZ150 / AZ200
	YS 350	350	420	15	0.70 to 3.00 mm	1550 Max	As per customer requirement	AZ150 / AZ200
	YS 450	450	480	8	0.70 to 3.00 mm	1550 Max	As per customer requirement	AZ150 / AZ200
	YS 550	550	550	NA	0.70 to 3.00 mm	1550 Max	As per customer requirement	AZ150

Class 1 - Min YS 340 Mpa and TS 450 Mpa
Class 2 - Min YS 340 Mpa and TS not defined

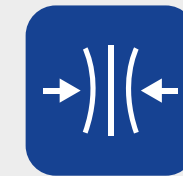


The JSW Galvos Promise



Branded BGL with Liner Marking of JSW GALVOS

- The assurance of the genuineness of the product



Close & customized Tolerances

- Flexibility in product tolerances, within the capability of the plant
- Customized product in line with the design requirements of the structures



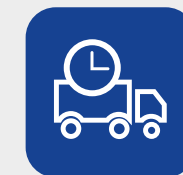
Prioritized Order Scheduling

- Timely supply of all parts.
- Fast-tracked orders
- Priority over other orders in line with project timelines



Rush order support

- Sudden project requirements support
- Agile and time bound project delivery



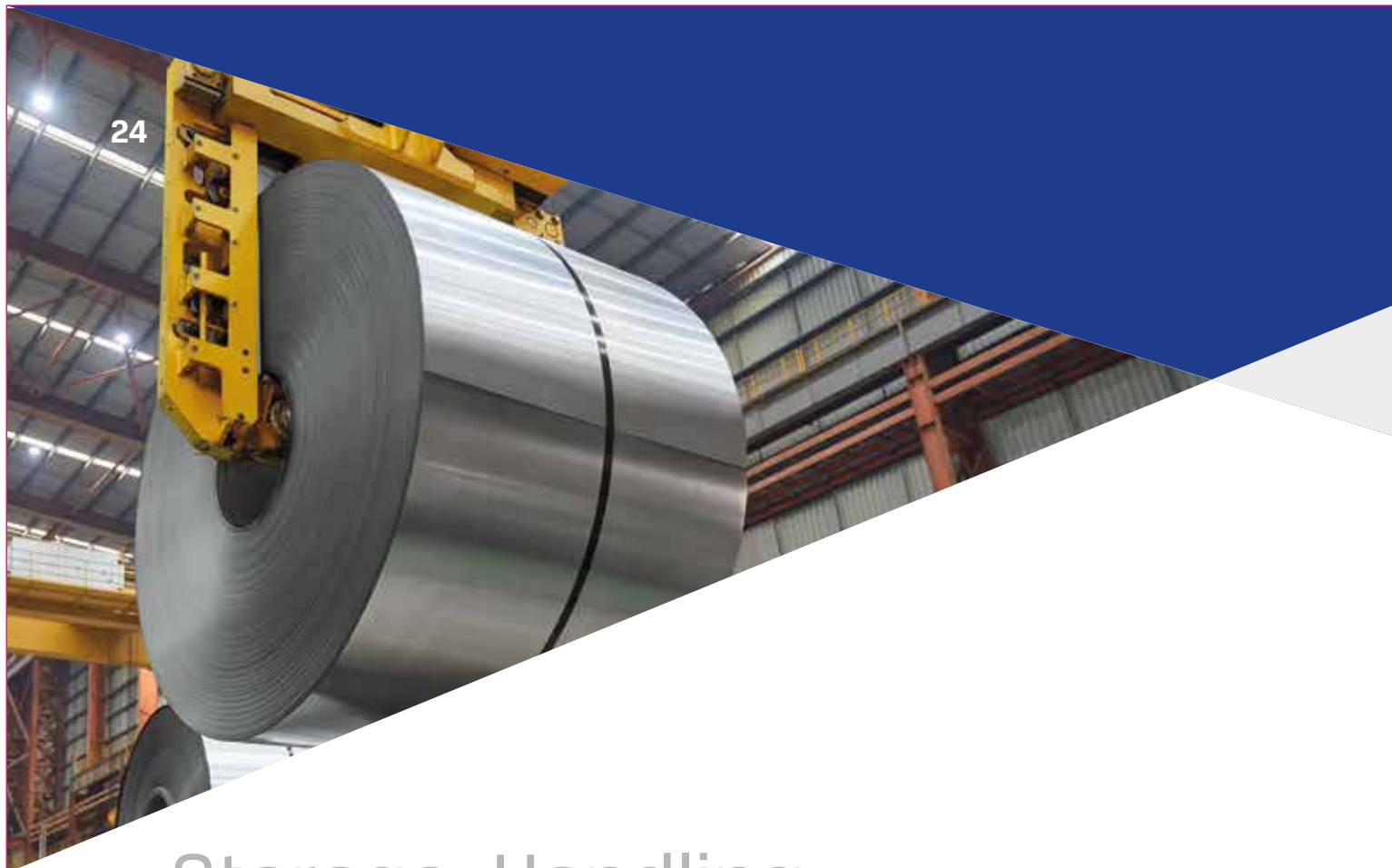
Customized Supply Schedules

- Manufacturing customized product thickness and proportions (ranging from 0.8 to 2mm)
- Customized supply schedules



In-House NABL Certified Testing

- Fully equipped plants with NABL certified testing equipment,
- Ensuring high degree of accuracy



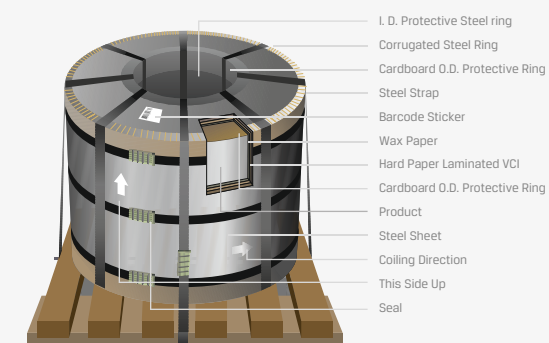
Storage, Handling and Maintenance

- Coil handling with 'C' hook padded with woolen felt
- The floor should be flat & clean
- Always keep the material in a dry, shaded and good ventilated area, avoid mud, water, rain etc.
- If not required for immediate use, provide cover to protect the material
- If sheets, coils or formed parts become wet during storage, it should be separated without delay & surface moisture removed with clean cloth. The steel sheets, coils or formed parts then should be stacked so that air circulation completes the drying process
- Do not use tight fitting plastic-type covering as packets/coils covers, while they may provide protection from heavy downpours, they will retard necessary ventilation and trap heat and moisture & may accelerate metal corrosion
- Under no circumstances should the material be stored near or come in contact with salt water, corrosive chemicals, ash or fumes generated or released inside the building or nearby plants, foundries, plating works, kilns, fertilizer and wet or green lumber
- Material to be kept slightly above the ground by using wooden rubber plank
- Do not slide sheet, coils and formed parts on rough surface or over each other
- It is recommended to apply Zinc spray on the slit edges and punched hole area of JSW Galvos

Packaging

JSW Steel offers effective packaging as per your requirements and complies with international norms. Emphasis is placed to ensure durability, prevention of any damage during transportation, and better storage.

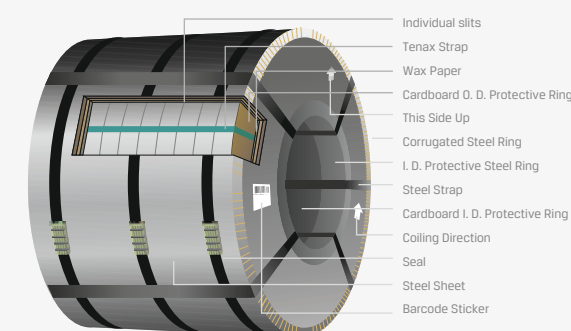
Eye to Sky Packing



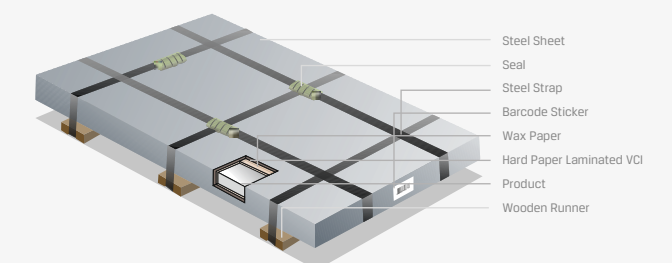
Eye to Wall Packing



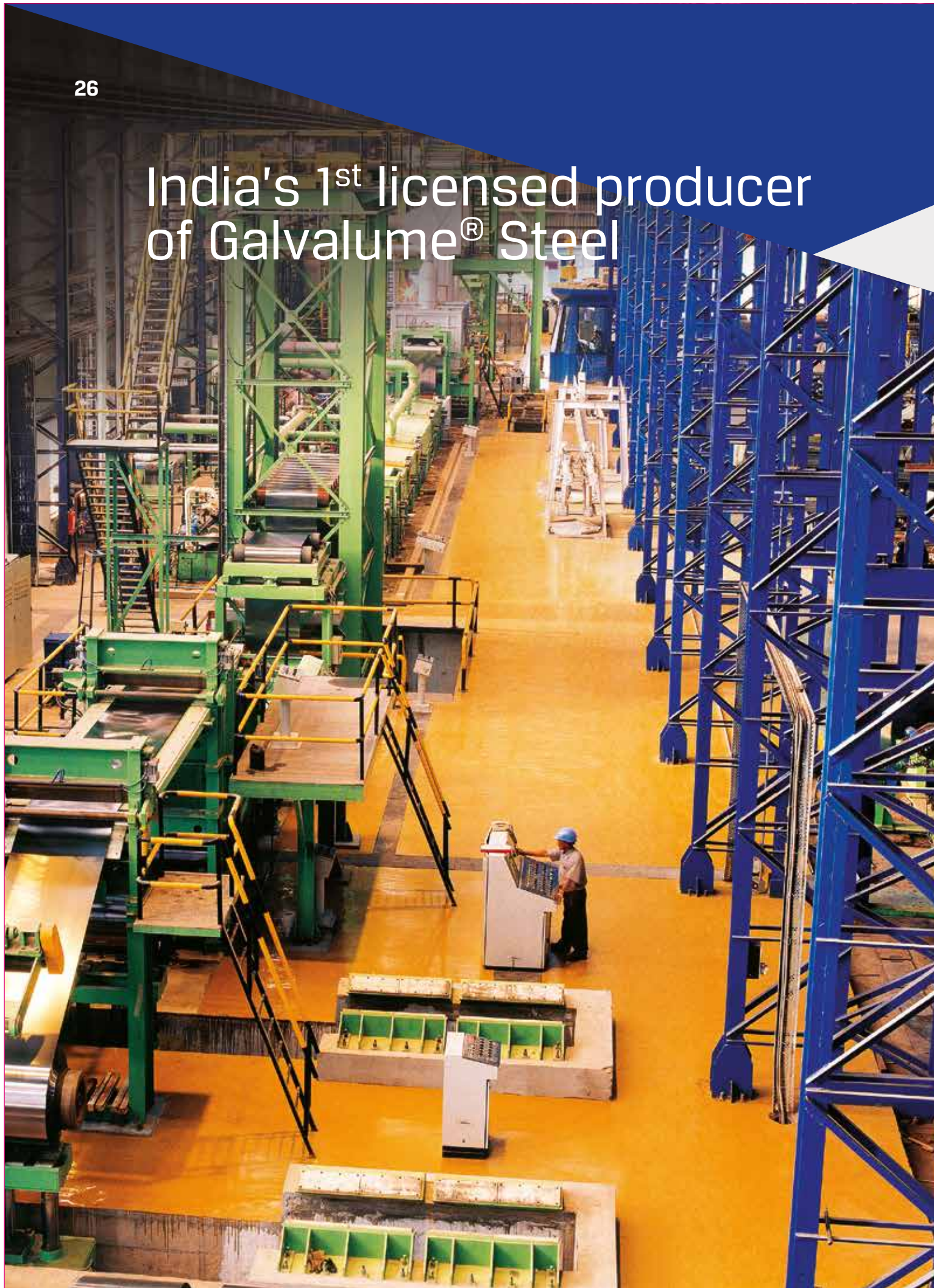
Slit - Master Coil Packing



Sheet Packing



India's 1st licensed producer of Galvalume® Steel



Utility Scale Project Developers

ReNew
POWER

SB Energy

SIEMENS Gamesa
RENEWABLE ENERGY

fortum

Azure Power

Greenko

ACME

SOLAR
DIRECT

TATA
TATA POWER SOLAR

Solar EPC Providers

LARSEN & TOUBRO

BELECTRIC®

susten
By Mahindra

STERLING & WILSON

TATA
TATA POWER SOLAR

WAAREE®
One with the Sun

vikram solar

Customers

nextracker.

GAMECHANGE SOLAR
REPOWERING THE PLANET

FTC SOLAR

UNIMACTS



Offices

Corporate Head Office

JSW Centre
Bandra Kurla Complex, Bandra (East), Mumbai - 400 051
Toll free: 1800-225-225

Sales Offices

Ahmedabad

Office no. 501 & 502
Mondeal Heights, B-wing Iscon Cross Road,
Near Novotel Hotel, opp. Karnavati Club, S. G. Highway,
Ahmedabad-380 054
Mobile: 09427334449
Tel: 079-49000270/271/272/273/274/275

Bengaluru

The Estate,
3rd Floor, West Wing, 121,
Dickenson Road,
Bengaluru - 560 042
Tel: 080-42448888

Chennai

5th Floor, KRM Plaza, No. 2,
Harrington Road, Chetpet,
Chennai - 600 031
Tel: 044-28297420, 28297422

Coimbatore

T. V. Swamy Road (West),
Coimbatore - 641 002
Tel: 0422-2541870

Delhi

NTH Complex (4th Floor),
A-2, Shaheed Jeet Singh Marg,
Qutub Institutional Area,
New Delhi - 110016
Tel: 011-48178600 | Fax: 011-48178699

Faridabad

Piyush Global I Building
1st Floor, Plot No.5, Opposite Escorts Mujesar Metro Station
Main Mathura Road, NH-2, YMCA Chowk, NIT
Faridabad - 121006, Haryana
Tel: 0129-2239248, 2232387

Noida

14A, Industrial Area, Buland Shar Road,
Ghaziabad - 201 009
Tel: 0120-3262875, 2867142

Guwahati

106, 3rd Floor, Meer Market, Maszid Lane, Kamarpatty,
Guwahati - 781 001
Tel: 0361-2730054

Hyderabad

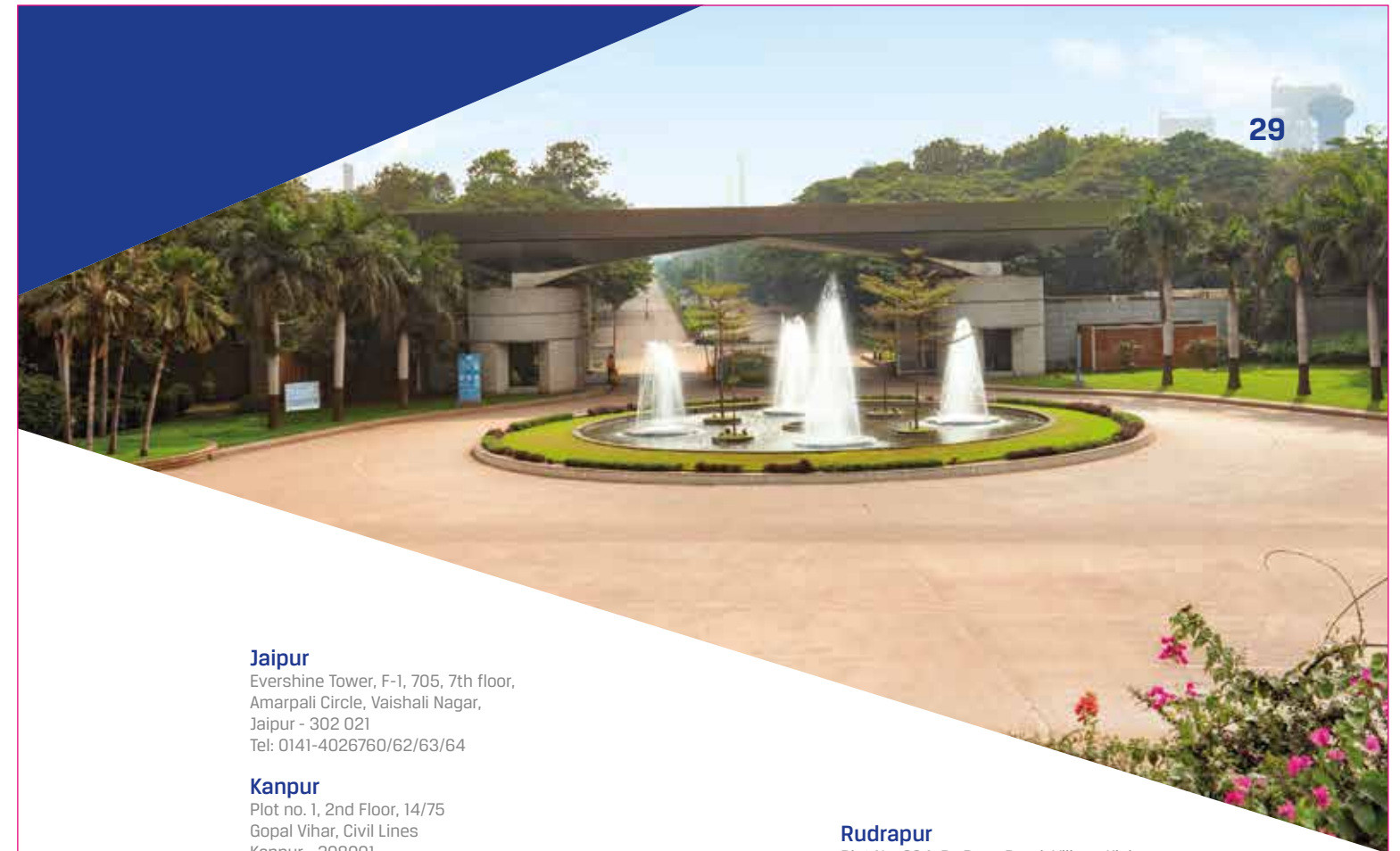
Babukhan Millenium Centre, 63-1099 /1100, 7
th Floor, Block - A, Somajiguda,
Hyderabad - 500082
Tel: 040-27846669/79

Indore

3rd Floor, Lakshya Badgara, 13/1,
New Palasia, Near Curewell Hospital,
Indore - 452 001
Tel: 0731-2532156/57/58/59, 4043613

Jaipur

Evershine Tower, F-1, 705, 7th floor,
Amarpali Circle, Vaishali Nagar,
Jaipur - 302 021
Tel: 0141-4026760/62/63/64



Jaipur

Evershine Tower, F-1, 705, 7th floor,
Amarpali Circle, Vaishali Nagar,
Jaipur - 302 021
Tel: 0141-4026760/62/63/64

Kanpur

Plot no. 1, 2nd Floor, 14/75
Gopal Vihar, Civil Lines
Kanpur - 208001
Mob. 9810125599

Kochi

Mitsun Enterprise, 30/1854 B4, 1st Floor, Ponnurrunni
Road, Chalikkavattom Junction, Vytilla P.O.,
Kochi - 682 019
Tel: 0484-4026392/4063294

Kolkata

Godrej Waterside,
10th floor, Tower - 1, Unit No. 1003,
Block - DP, Plot - 5, Sector V, Salt Lake City,
Kolkata - 700 091,
Tel: 033-40002020

Ludhiana

3rd Floor, SCO 7-8
Canal Colony, Pakhowal Road
Ludhiana - 141001
Tel no. (0161) 6611700

Mumbai

Grande Palladium,
6th Floor, 175, CST Road, Kalina, Santacruz (East),
Mumbai - 400 098
Tel: 022-61871000

Nagpur

Poonam Plaza, Palm Road, Civil Lines,
Nagpur-440 001
Tel: 0712- 2520333

Patna

1, Tilak Nagar East, Behind Patna Diesel, Kankarbagh,
Patna - 800 020
Tel: 08002230517

Pune

Epicentre, 2nd Floor, CTS No. 4/6,
Above Royal Enfield Showroom, Shivajinagar, Wakdewadi
Pune - 411005
Tel: 020-64104547, 27111427

Rudrapur

Plot No. 264, By Pass Road, Village Kishanpur,
Kichha, District Udham Singh Nagar,
Uttarakand - 263 148
Tel: 05944-263290

Middle East Office

JSW Steel Ltd. (DMCC Branch)

Unit 309 | X - 3 Tower | Jumeirah Lakes Towers
Dubai, UAE P.O. Box # 33650
Tel.: +971 4 4385286
Mobile: +971 55336097

USA Offices

JSW Steel USA Baytown

5200 East McKinney Road, Baytown, Texas 77523,
Tel.: 281-383-5100
sales@jswsteel.us

JSW Steel USA Ohio

1500 Commercial Avenue, Mingo Junction, OH 43938
Mobile: 740-535-8172

Italy Office

JSW Steel Italy

Largo Caduti Sul Lavoro 21
57025, Piombino LI, Italy
Tel: +39 0565 64111